



Inflight Service Trolley Castors

Lightweight Inflight Service Trolley Castors

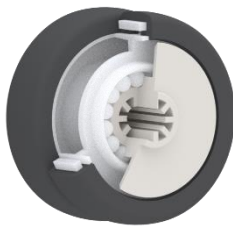
Swivel castors with nylon frames and twin PU wheels.
Maximum load capacity tested according to BS EN 12530:1999 requirements.

Fixing System	Top plate
Frame	Nylon 6
Wheel Tread	Polyurethane
Wheel Bearing Type	Plastic ball bearings
Brake / Stopper	Wheel brake (central wheel lock system compatible)



Picture may differ from actual product

Features



Twin polyurethane wheels with plastic ball bearings

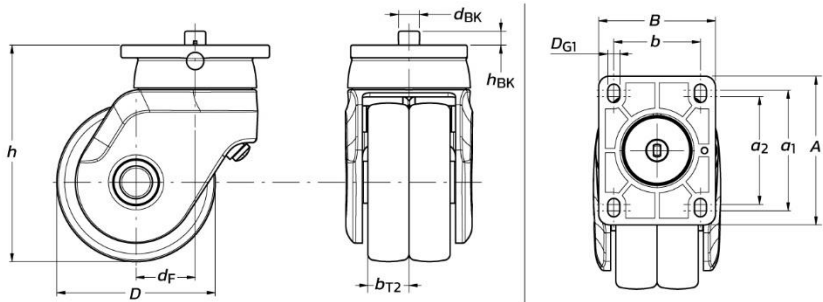


Lightweight nylon frame



Central Wheel Lock

Technical Information



PJFT Swivel Castor

Order Code	Load Capacity (kg)	Dimensions (unless stated otherwise, dimensions are in millimetres)													Physical Mass (in grams)
		A	a ₁	a ₂	B	b	D _{G1}	D	h	d _F	d _{BK}	h _{BK}	b _{T2}	Swept Radius	
PJFT-75-E	50	70,3	57	51	55,2	41	5,7	75	102	28	10	6,8	19,5	67	300

Technical information and dimensions provided above are subject to tolerances